

Otway Offshore Project

Drilling locations and timings



Information Sheet | 28 February 2022

Project overview

Beach Energy is continuing development of the Otway basin offshore natural gas reserves to ensure ongoing supply of natural gas to the Australian east coast gas market. Several wells are being drilled in Commonwealth waters, ranging from 32 to 80 km from Port Campbell. For detailed project information click [here](#).

Timing and locations

Drilling commenced in February 2021 and is expected to be completed by end of December 2022, followed by activities through to mid-2023 to tie-in the new wells to the existing pipeline and platform. Drilling of the Thylacine West-1 and West-2 wells is expected to be completed before end of April 2022. The rig will then move to the Thylacine North-2 location to drill the final well that will take between 70 and 90 days, depending on weather conditions. Drilling sequence from first to last is in the table below:

Well name	Latitude (S)	Longitude (E)
¹ Artisan-1	38°53.491'	142°52.928'
¹ Geographe-5	39°6.480'	142°57.084'
¹ Geographe-4	39°6.494'	142°57.067'
¹ Thylacine North-1	39°12.510'	142°52.495'
Thylacine West-2	39° 13.332'	142° 50.310'
Thylacine West-1	39° 13.336'	142° 50.336'
Thylacine North-2	39° 12.284'	142° 51.557'

¹Drilling completed.

Safety exclusion zones

Vessels must not enter the 500 m radius Petroleum Safety Zone (PSZ) around the drill rig. During drilling, there will be a further safety cautionary zone of two-kilometre radius around the rig's mooring lines. A Notice to Mariners will be issued by the Australia Hydrographic Office. After drilling is complete, PSZs will remain in place at each wellhead. A further permanent PSZ will be created around new seabed infrastructure (see map).

Mooring lines and anchors

In preparation for drilling the final well in this campaign, approximately mid-to-late March 2022 mooring lines and anchors will be relocated from the Thylacine North-1 well to the Thylacine North-2 well. The table below shows the coordinates for the existing mooring lines of the Thylacine North-1 well and the mooring lines for the Thylacine North-2 well, once they are in place.

Line	Thylacine North-1 well		Thylacine North-2 well	
	Latitude (S)	Longitude (E)	Latitude (S)	Longitude (E)
1	39° 13.299'	142° 52.629'	39° 13.030'	142° 51.709'
2	39° 13.182'	142° 52.629'	39° 12.898'	142° 51.009'
3	39° 13.621'	142° 52.464'	39° 12.377'	142° 50.604'
4	39° 13.095'	142° 52.625'	39° 11.834'	142° 50.778'
5	39° 13.776'	142° 52.344'	39° 11.538'	142° 51.778'
6	39° 13.868'	142° 52.070'	39° 11.671'	142° 52.105'
7	39° 13.411'	142° 52.497'	39° 12.191'	142° 52.510'
8	39° 13.980'	142° 52.314'	39° 12.735'	142° 52.336'

Contact details for vessels

Marine users can communicate with the vessels at any time via channel 16 or the contact details below:

Diamond Ocean Onyx Drilling Rig

Call sign: V7EB9

Contact number: +65 6480 3960 / +61 8 6263 0410

Support Vessels

Siem Topaz

Call sign: LAYN7

Contact number: +61 (0) 429 115 283

Siem Amethyst

Call sign: LCBM3

Contact number: +61 (0) 436 098 017

Siem Aquamarine

Call sign: LARB3

Contact number: +61 (0) 417 283 434

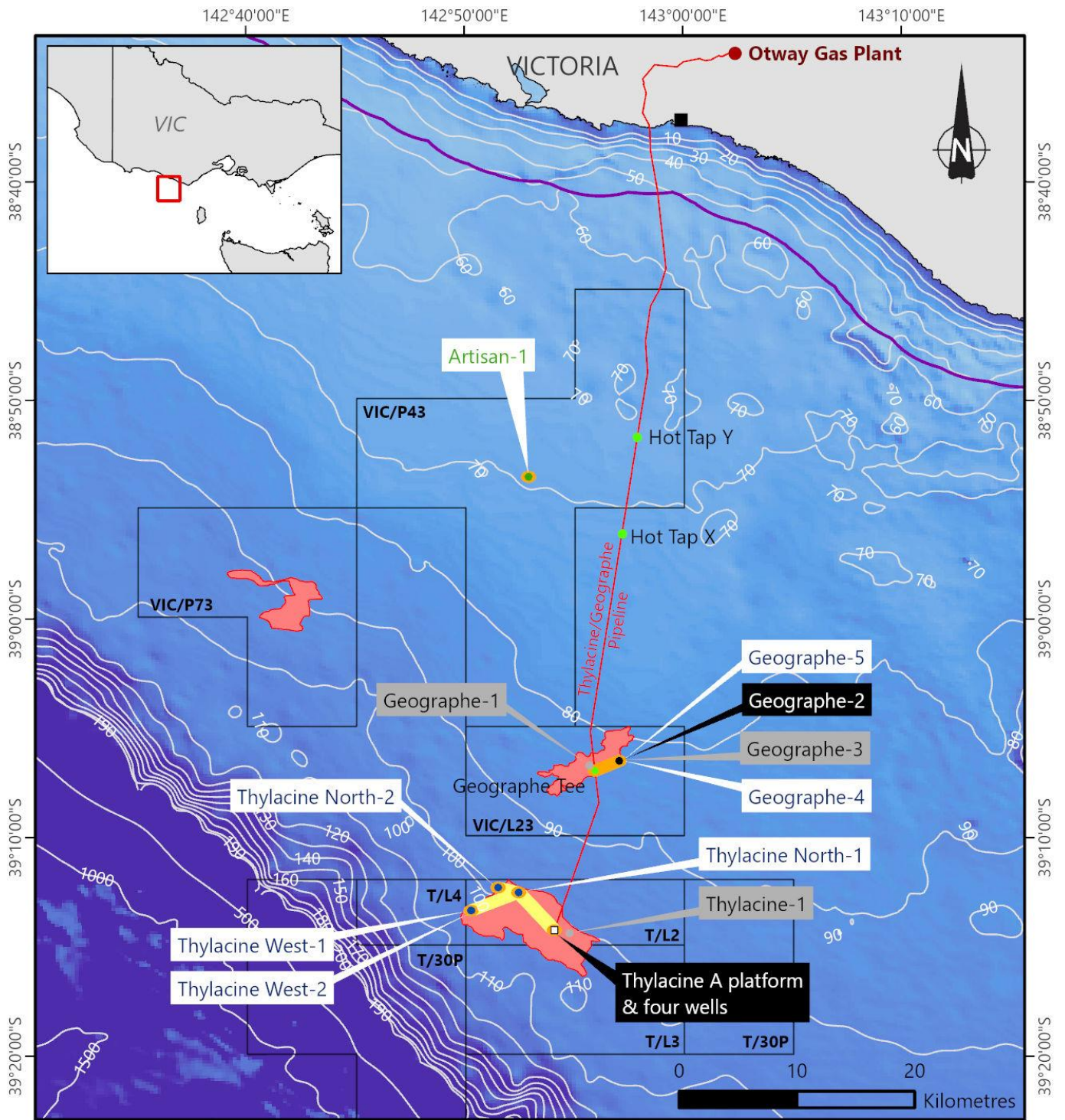
We welcome your questions and feedback.

Please contact us on 1800 797 011 or email community@beachenergy.com.au

Please note: all records of stakeholder engagement will be provided to NOPSEMA in accordance with regulations.



Otway Offshore Project — Location map



GDA2020

- Existing production wells
- Suspended wells
- New production wells
- Future production well
- Hot tap tees
- Thylacine platform
- Existing gas pipeline
- Beach permits
- Coastal waters (3nm limit)
- Gas fields
- Existing PSZ (6.50 Km²)
- Planned PSZ (6.15 Km²)

25/02/2022

The locations on this map are accurate at the time of publication and are subject to change

OT22-0010