

Otway Offshore Project

Update on drilling campaign



Information Sheet | 28 February 2022



Drilling activity

The Ocean Onyx drill rig is currently drilling the Thylacine West-1 and Thylacine West-2 wells. Approximately early April 2022 the rig will move to its final drilling location at Thylacine North-2 well which will take between 70 to 90 days to complete, subject to weather. The location is approximately 68 km south of Port Campbell at the following coordinates.

Latitude (S)	Longitude (E)
39° 12.284'	142° 51.557'

Mooring lines and anchors

In preparation for drilling the final well in this campaign, approximately mid-to-late March 2022 mooring lines and anchors will be relocated from the Thylacine North-1 well to the Thylacine North-2 well. The table below shows the coordinates for the existing mooring lines of the Thylacine North-1 well and the mooring lines for the Thylacine North-2 well, once they are in place.

	Thylacine North-1 well		Thylacine North-2 well	
Line	Latitude (S)	Longitude (E)	Latitude (S)	Longitude (E)
1	39° 13.299'	142° 52.629'	39° 13.030'	142° 51.709'
2	39° 13.182'	142° 52.629'	39° 12.898'	142° 51.009'
3	39° 13.621'	142° 52.464'	39° 12.377'	142° 50.604'
4	39° 13.095'	142° 52.625'	39° 11.834'	142° 50.778'
5	39° 13.776'	142° 52.344'	39° 11.538'	142° 51.778'
6	39° 13.868'	142° 52.070'	39° 11.671'	142° 52.105'
7	39° 13.411'	142° 52.497'	39° 12.191'	142° 52.510'
8	39° 13.980'	142° 52.314'	39° 12.735'	142° 52.336'

Further activities

In 2023, seabed infrastructure will be installed and well connection and commissioning activities will be undertaken. Further updates will be provided.

Safety exclusion zone

Vessels must not enter the 500 m radius Petroleum Safety Zone (PSZ) around the drill rig. During drilling, there will be a further safety cautionary zone of two-kilometre radius around the rig's mooring lines.

After drilling is complete, PSZs will remain in place at each wellhead. A further permanent PSZ will be created around new seabed infrastructure (see map).

Contact details for vessels

Marine users can communicate with the drill rig and support vessels via channel 16 or the following contact details.

Diamond Ocean Onyx Drilling Rig

Call sign: V7EB9

Contact number: +65 6480 3960 / +61 8 6263 0410

Support Vessels

Siem Topaz

Call sign: LAYN7

Contact number: +61 (0) 429 115 283

Siem Amethyst

Call sign: LCBM3

Contact number: +61 (0) 436 098 017

Siem Aquamarine

Call sign: LARB3

Contact number: +61 (0) 417 283 434

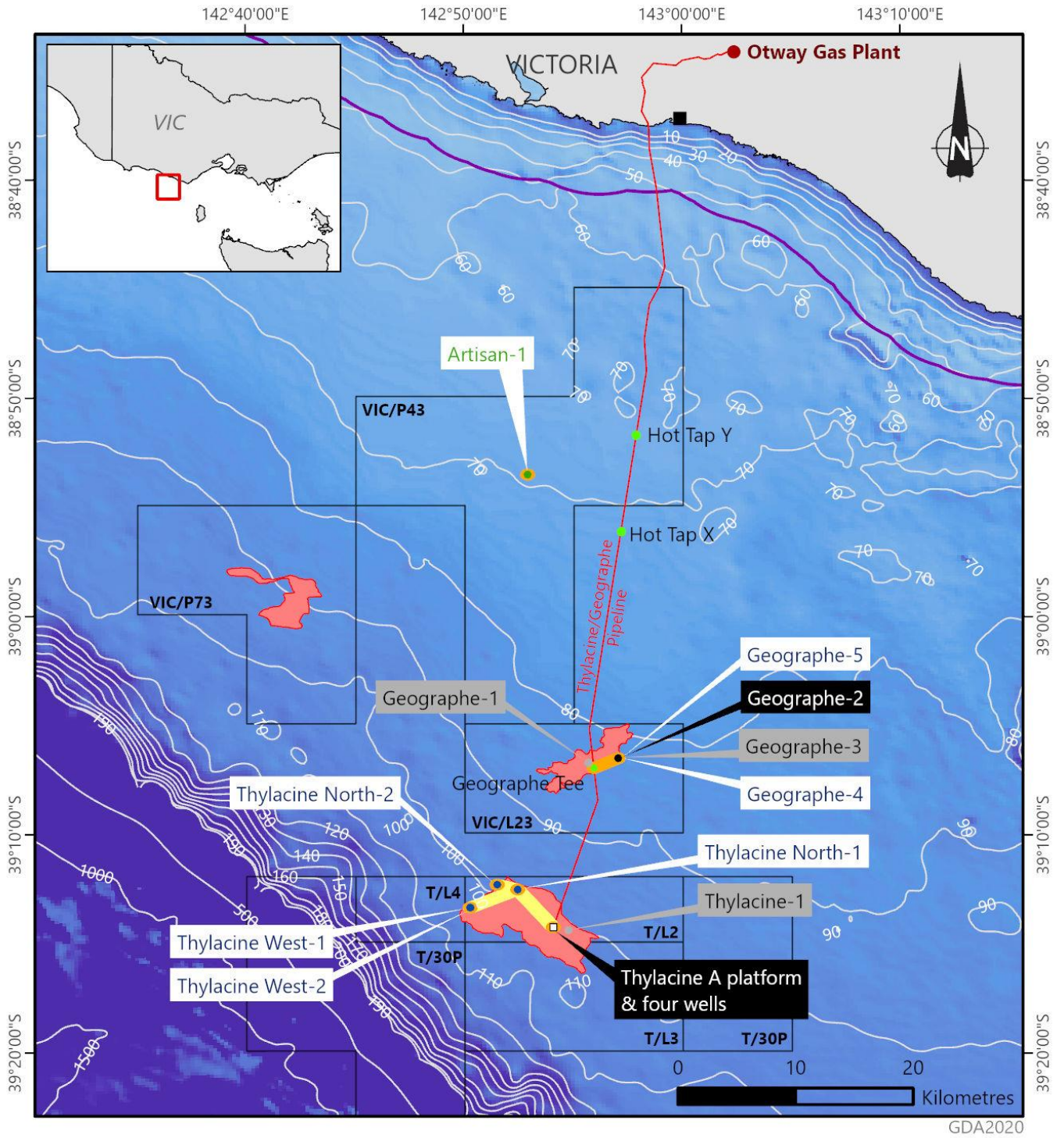
Further information

Further detailed information on the Otway Offshore Project can be found on the [Beach website](#). Details on the Environment Plan for the Otway Offshore Development can be found on [NOPSEMA's website](#).

We welcome your questions and feedback.

Please contact us on 1800 797 011 or email community@beachenergy.com.au

Please note: all records of stakeholder engagement will be provided to NOPSEMA in accordance with regulations.



- Existing production wells
- Suspended wells
- New production wells
- Future production well
- Hot tap tees
- Thylacine platform
- Existing gas pipeline
- Beach permits
- Coastal waters (3nm limit)
- Gas fields
- Existing PSZ (6.50 Km²)
- Planned PSZ (6.15 Km²)

25/02/2022

The locations on this map are accurate at the time of publication and are subject to change

OT22-0010