

Otway Offshore Project

Update on drilling campaign



Information Sheet | 7 July 2022



Completion of Drilling

Beach Energy and its joint venture partner have invested close to one billion dollars in the Otway Offshore Project. The drilling phase that commenced in February 2021 is about to complete and has delivered six production wells and one successful exploration well.

Two of the new production wells have already been connected to the existing pipeline to the Otway Gas Plant, where the gas is processed and is providing a significant contribution to meet the strong household and industry demands of the East Coast gas market.

The drilling campaign saw outstanding safety and environmental performance, and successfully managed many challenges due to COVID-19.

Towing of drilling rig

From approximately 11 July 2022 (*subject to weather*), the Diamond Ocean Onyx drilling rig will be towed over 2 days, from its current (*waypoint 1 on map*) to Port Phillip Bay, Victoria, where it will remain for approximately 2 weeks before being towed along the east coast to Western Australia.

Mooring lines and anchors

From 7 July 2022 the mooring lines will be disconnected from the drilling rig and attached to buoys before final removal of lines and anchors (at coordinates below) by end of July 2022, subject to weather conditions.

Line	Latitude (S)	Longitude (E)
1	39° 13.030'	142° 51.709'
2	39° 12.898'	142° 51.009'
3	39° 12.377'	142° 50.604'
4	39° 11.834'	142° 50.778'
5	39° 11.538'	142° 51.778'
6	39° 11.671'	142° 52.105'
7	39° 12.191'	142° 52.510'
8	39° 12.735'	142° 52.336'

Further activities

In late 2022 and early to mid-2023, additional seabed infrastructure will be installed, and the new Thylacine production wells will be connected. Further timing updates will be provided, along with vessel details.

Safety exclusion zone

Vessels must not approach the drilling rig whilst is under tow.

Petroleum Safety Zones are in place at each wellhead. A further permanent PSZ will be created around new seabed infrastructure (see map).

Contact details for vessels

Marine users can communicate with the drill rig and support vessels via channel 16 or the following contact details.

Diamond Ocean Onyx Drilling Rig

Call sign: V7EB9

Contact number: +65 6480 3960 / +61 8 6263 0410

Tow Vessel

Siem Amethyst

Call sign: LCBM3

Contact number: +61 (0) 436 098 017

Further information

Further detailed information on the Otway Offshore Project can be found on the [Beach website](#). Details on the Environment Plan for the Otway Offshore Development can be found on [NOPSEMA's website](#).

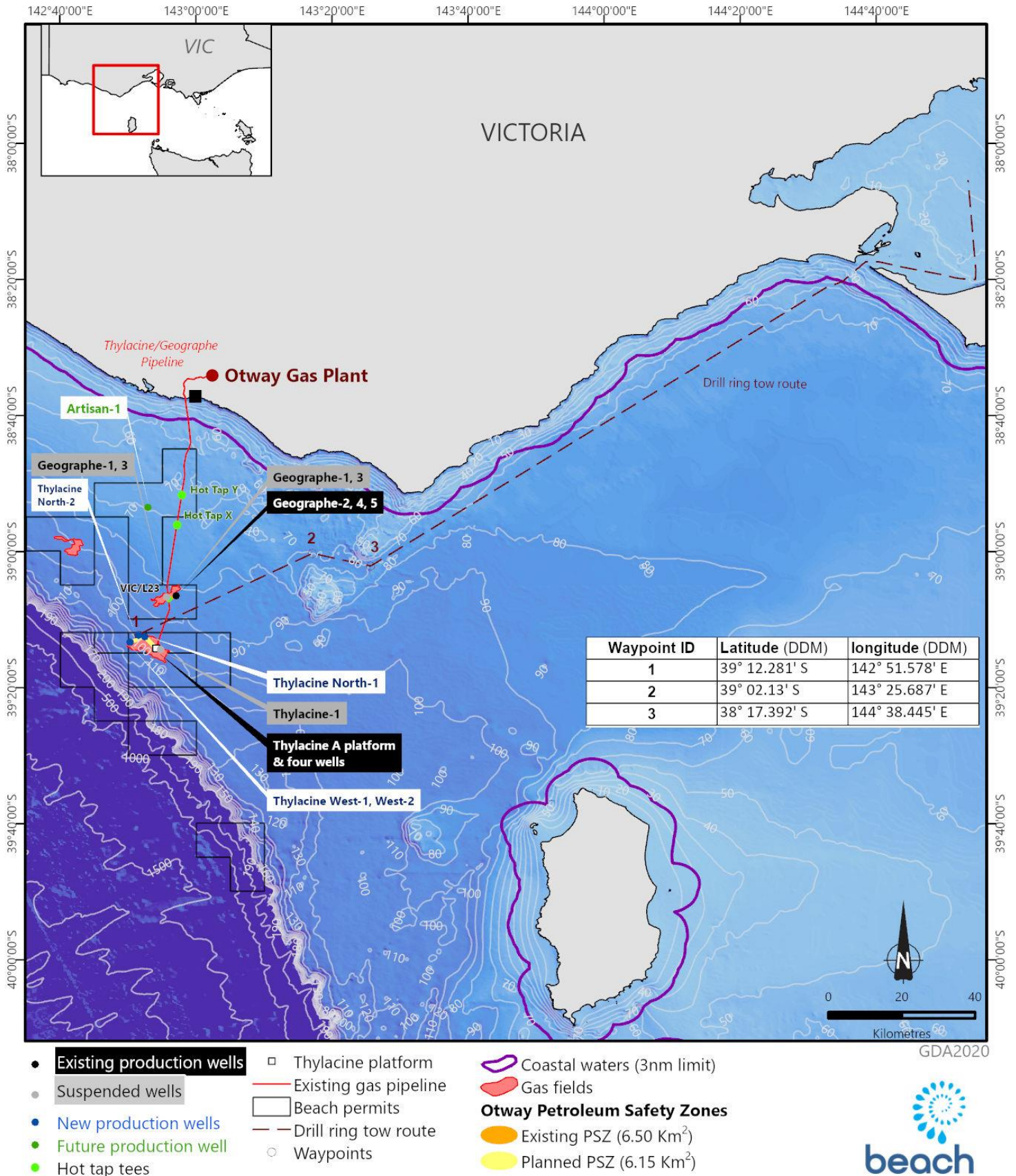
We welcome your questions and feedback.

Please contact us on 1800 797 011 or email community@beachenergy.com.au

Please note: all records of stakeholder engagement will be provided to NOPSEMA in accordance with regulations.



Otway Offshore Project — location & drilling rig tow map



6/07/2022

The locations on this map are accurate at the time of publication and are subject to change

OT22-0010 R4