

Otway Offshore Project

Update on drilling campaign



Information Sheet | 14 January 2022



Thylacine North-1 well completed

Beach Energy has completed drilling the Thylacine North-1 well which will be connected in the future after completion of the drilling campaign.

Current activity and location

The Diamond Onyx drilling rig is being moved and is expected to be on location on 15 January 2022 to commence drilling the Thylacine West-2 well, 68.3 km south of Port Campbell at the following coordinates:

| Northing (m) | Easting (m) | Latitude (S) | Longitude (E) |
|--------------|-------------|-----------------|------------------|
| 5,656,947.0 | 658,742.0 | 39° 13' 20.149" | 142° 50' 18.586" |

Mooring chains and anchors

New mooring chains and anchors for the Thylacine West-1 and 2 wells are at the following coordinates:

| Line | Northing (m) | Easting (m) | Latitude (S) | Longitude (E) |
|------|--------------|-------------|---------------|----------------|
| 1 | 5,656,947 | 662,043 | 39°13'17.947" | 142°52'37.724" |
| 2 | 5,657,186 | 661,004 | 39°13'10.902" | 142°52'54.235" |
| 3 | 5,658,236 | 660,393 | 39°13'37.253" | 142°52'27.858" |
| 4 | 5,659,203 | 660,644 | 39°13'05.729" | 142°52'37.486" |
| 5 | 5,659,774 | 661,692 | 39°13'46.544" | 142°52'20.659" |
| 6 | 5,659,581 | 662,732 | 39°13'52.104" | 142°52'04.171" |
| 7 | 5,658,563 | 663,326 | 39°13'24.689" | 142°52'29.798" |
| 8 | 5,657,517 | 663,041 | 39°13'58.788" | 142°52'18.828" |

Anchors and mooring chains will remain on the seabed at the previously advised Thylacine North-1 anchor locations for 4 – 6 months when they will be relocated for the next location (Thylacine North-2).

Timing

The three remaining Thylacine production wells will be drilled sequentially, taking 70 to 90 days each, with the drilling campaign to be completed before end of 2022 and wells connected in 2023.

Safety exclusion zone

Vessels must not enter the 500 m radius Petroleum Safety Zone (PSZ) around the drill rig. After drilling is complete, PSZs will remain in place at each wellhead. During drilling, there will also be a further safety cautionary zone of two-kilometre radius around the rig's mooring chains and anchors.

Contact details for vessels

Marine users can communicate with the drill rig and support vessels via channel 16 or the following contact details.

Diamond Ocean Onyx Drilling Rig

Call sign: V7EB9

Contact number: +65 6480 3960 / +61 8 6263 0410

Support Vessels

Siem Topaz

Call sign: LAYN7

Contact number: +61 (0) 429 115 283

Siem Amethyst

Call sign: LCBM3

Contact number: +61 (0) 436 098 017

Siem Aquamarine

Call sign: LARB3

Contact number: +61 (0) 417 283 434

Further information

Further detailed information on the Otway Offshore Project can be found on the [Beach website](#). Details on the Environment Plan for the Otway Offshore Development can be found on [NOPSEMA's website](#).

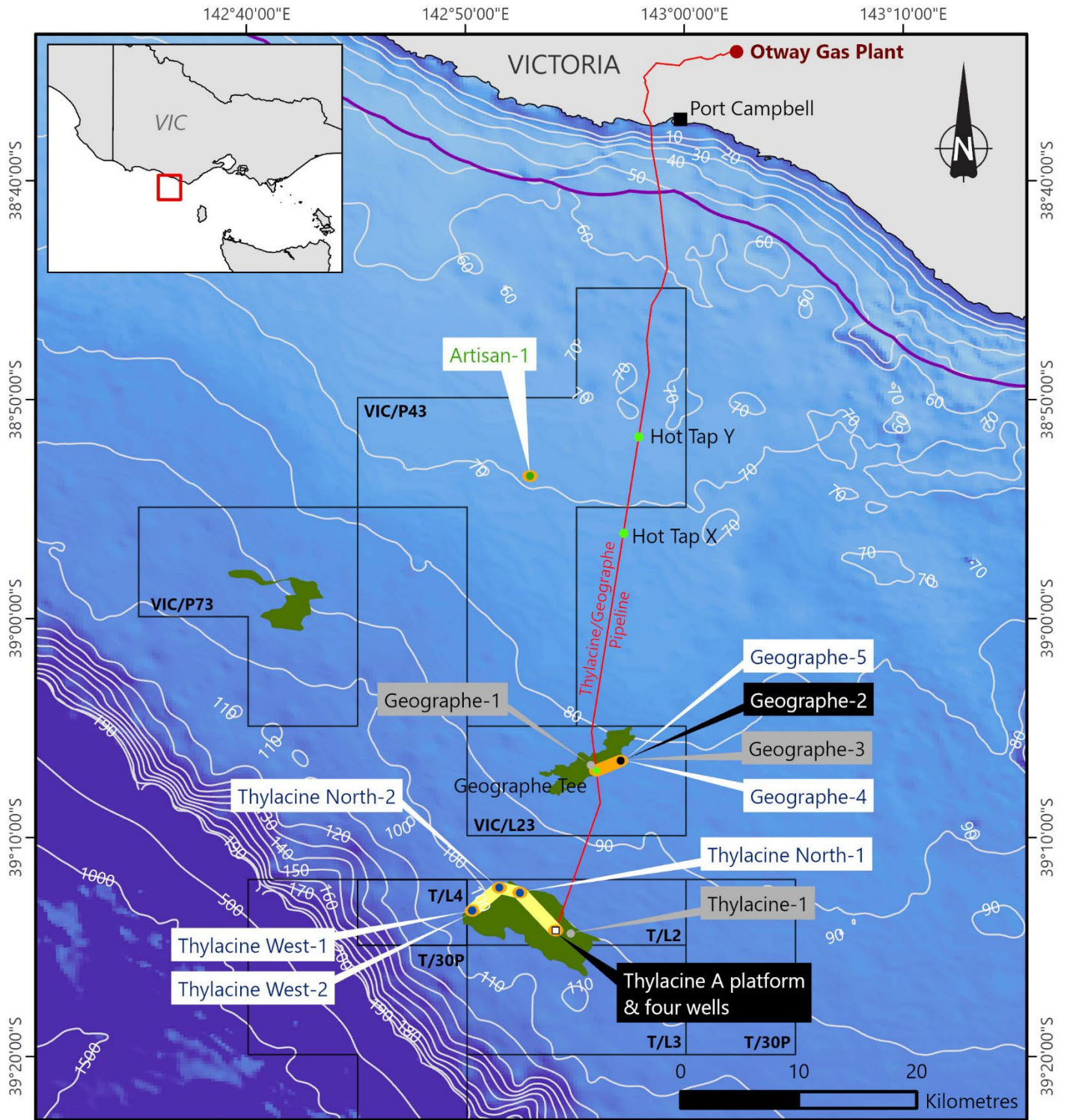
We welcome your questions and feedback.

Please contact us:

P: 1800 797 011

E: community@beachenergy.com.au

www.beachenergy.com.au



GDA2020

- Existing production wells
- Suspended wells
- New production wells
- Future production well
- Hot tap tees
- Thylacine platform
- Existing gas pipeline
- Beach permits
- Coastal waters (3nm limit)
- Gas fields
- Existing PSZ (6.50 Km²)
- Planned PSZ (5.65 Km²)

6/12/2021

The locations on this map are accurate at the time of publication and are subject to change

OT21-0003H