

# Otway Offshore Project

## Update on drilling campaign



Information Sheet | 21 December 2021



### Geographe wells completed

Beach has completed activities on the Geographe-4 and Geographe-5 production wells, including installation of seabed infrastructure to connect the wells to the existing pipeline and platform. The construction support vessel, Skandi Singapore, has demobilised from the site.

### Mooring chains and anchors

Mooring chains and anchors at the Geographe wells locations have been removed.

### Current activity and location

The Diamond Onyx drill rig is currently on location and drilling the Thylacine North-1 well, 66 km south of Port Campbell at the following coordinates:

<b>Northing (m)</b>	<b>Eastings (m)</b>	<b>Latitude (S)</b>	<b>Longitude (E)</b>
5,658,410	661,880	39° 12' 30.63"	142° 52' 29.67"

### Timing

A total of four new Thylacine production wells will be drilled sequentially, taking approximately 70 — 90 days each. Drilling is expected to be completed by December 2022.

### Safety exclusion zone

Vessels in the area are required to observe a 500 m radius Petroleum Safety Zone (PSZ) around the drill rig at all locations and not enter the PSZ. After drilling is complete, PSZs will remain in place at each wellhead. During drilling, a further two-

kilometre radius cautionary zone will be in place to avoid the rig's mooring chains and anchors.

### Contact details for vessels

Marine users can communicate with the drill rig and support vessels via channel 16 or the following contact details.

#### Diamond Ocean Onyx Drilling Rig

**Call sign:** V7EB9

**Contact number:** +65 6480 3960 / +61 8 6263 0410

#### Support Vessels

##### Siem Topaz

**Call sign:** LAYN7

**Contact number:** +61 (0) 429 115 283

##### Siem Sapphire

**Call sign:** LDTO3

**Contact number:** +61 (0) 436 098 017

##### Siem Aquamarine

**Call sign:** LARB3

**Contact number:** +61 (0) 417 283 434

### Further information

Further detailed information on the Otway Offshore Project can be found on the [Beach website](#). Details on the Environment Plan for the Otway Offshore Development can be found on [NOPSEMA's website](#).

### We welcome your questions and feedback.

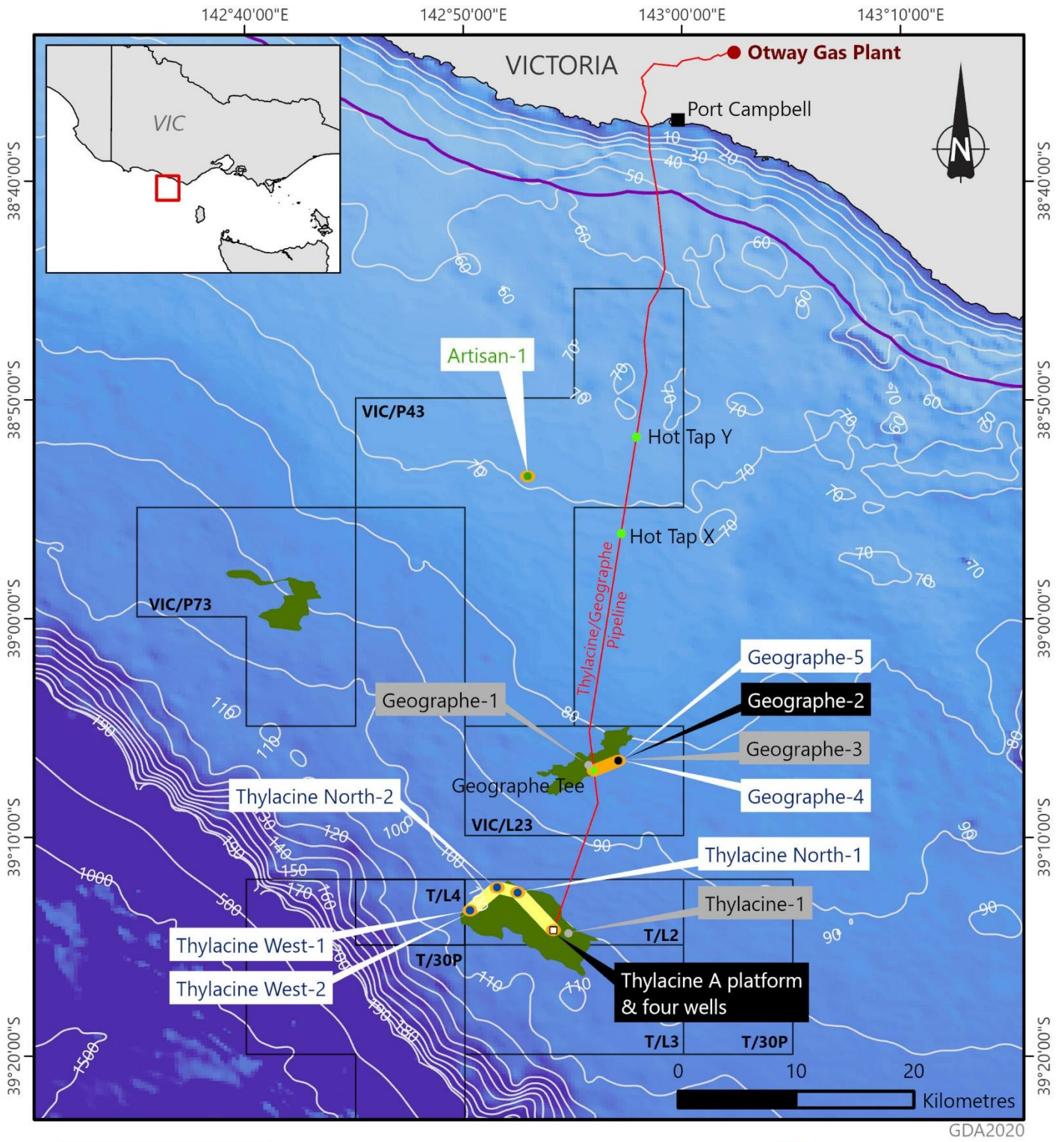
#### Please contact us on:

P: 1800 797 011

E: [community@beachenergy.com.au](mailto:community@beachenergy.com.au)

[www.beachenergy.com.au](http://www.beachenergy.com.au)

# Otway Offshore Project — Location map



- Existing production wells
- Suspended wells
- New production wells
- Future production well
- Hot tap tees
- Thylacine platform
- Existing gas pipeline
- Beach permits
- Coastal waters (3nm limit)
- Gas fields
- Existing PSZ (6.50 Km<sup>2</sup>)
- Planned PSZ (5.65 Km<sup>2</sup>)

6/12/2021

The locations on this map are accurate at the time of publication and are subject to change

OT21-0003H