

Otway Offshore Project

Update on drilling campaign



Information Sheet | November 2021



Connecting wells

Beach is in the final stage of completing well activities on the Geographe-4 and Geographe-5 production wells and will soon begin installing seabed infrastructure to connect the wells to the existing pipeline. The Skandi Singapore is a purpose-built vessel for offshore installations and will enter the area to undertake the work.

Mooring chains and anchors

Mooring chains and anchors have been pre-laid in preparation for drilling the Thylacine wells (see map). The mooring chains and anchors for the Geographe wells will be removed after the Diamond Onyx drilling rig has moved to its new location, and marker buoys will be placed until they are removed.

Location of work activity

The Geographe wells are located approximately 54 km south of Port Campbell. The Skandi Singapore will be at the following approximate coordinates.

Northing (m)	Easting (m)
5,669,401	668,727

Timing

The Skandi Singapore will begin installing seabed infrastructure from 24 November 2021. Work will take 14 to 24 days to complete. The drilling rig is due to move to the Thylacine wells location on 11 November 2021; removal of the mooring chains will begin mid-November and be completed by the end of December. Start times and durations of all work will be subject to weather conditions.

Safety exclusion zone

All vessels in the area must observe the 500 m radius Petroleum Safety Zone (PSZ) around the Skandi Singapore. The Australia Hydrographic Office will issue A Notice to Mariners.

Contact details for vessels

Marine users can communicate with the Skandi Singapore, drilling rig and support vessels via channel 16 or via the following contact details.

Skandi Singapore

Call sign: LAEQ7

Contact numbers: +47 2367 5130 or +870 7650 64958

Diamond Ocean Onyx Drilling Rig

Call sign: V7EB9

Contact number: +65 6480 3960 / +61 8 6263 0410

Support Vessels

Siem Topaz

Call sign: LAYN7

Contact number: +61 (0) 429 115 283

Siem Sapphire

Call sign: LDTO3

Contact number: +61 (0) 436 098 017

Siem Aquamarine

Call sign: LARB3

Contact number: +61 (0) 417 283 434

Further information

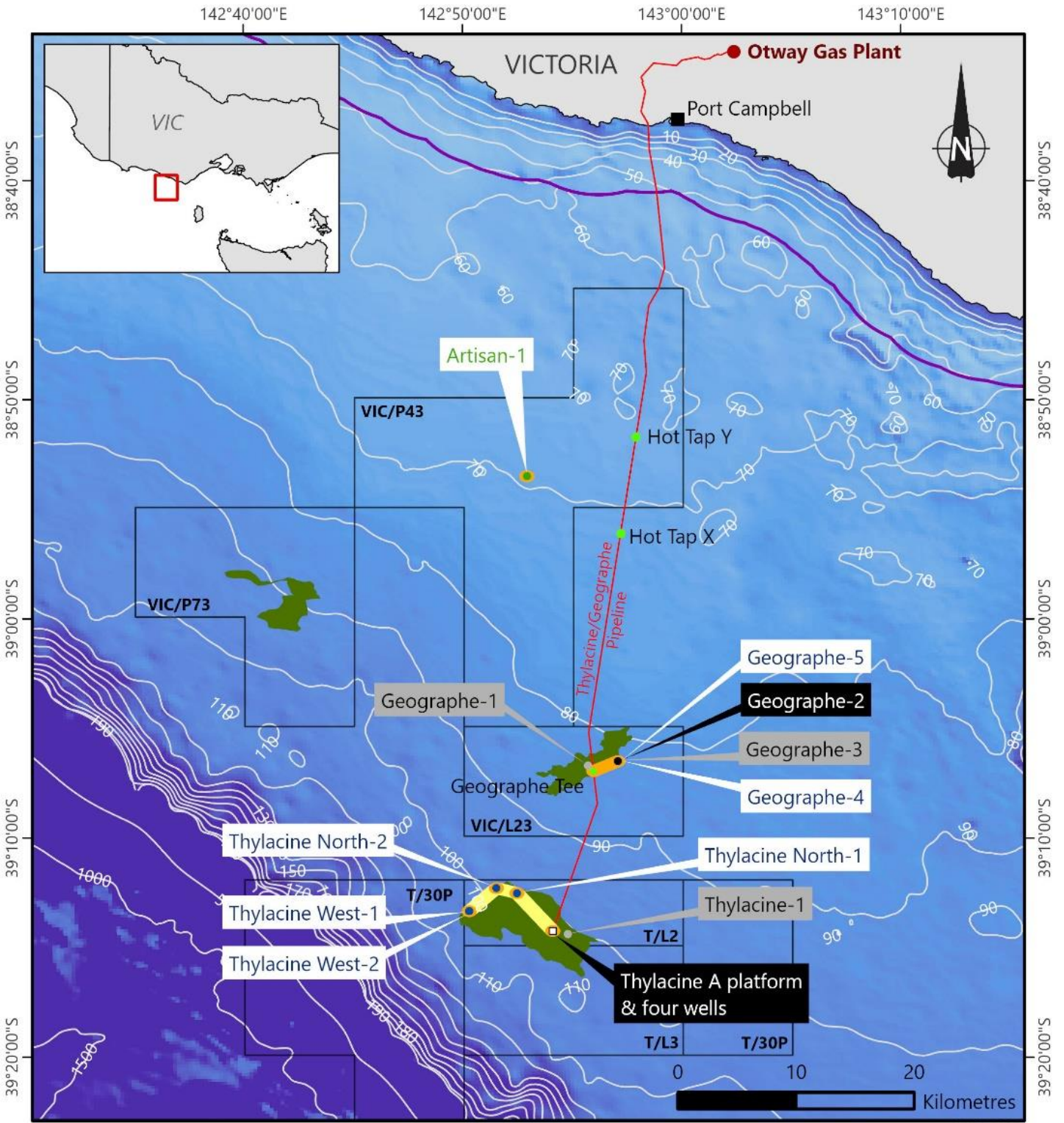
Further detailed information can be found on the [Beach website](#). For information on the Environment Plan for the Otway Offshore Development, please visit [NOPSEMA's website](#).

Please call or email us with any questions and feedback

P: 1800 797 011

E: community@beachenergy.com.au

Otway Offshore Project — Location map



GDA2020

- Existing production wells
- Suspended wells
- New production wells
- Future production well
- Hot tap tees
- Thylacine platform
- Existing gas pipeline
- Beach permits
- Coastal waters (3nm limit)
- Gas fields
- Existing PSZ (6.50 Km²)
- Planned PSZ (5.65 Km²)

17/09/2021

The locations on this map are accurate at the time of publication and are subject to change

OT21-0003G-R3