

# Otway Offshore Project

## Update on drilling campaign



Information Sheet | October 2021



### Drilling rig move

The Diamond Onyx drilling rig has completed drilling the Geographe-4 and Geographe-5 production wells located 54 km south of Port Campbell (see map). The wells are currently undergoing completions activities in preparation for connecting to the existing offshore to onshore pipeline over the coming months.

Depending on weather conditions, around early November 2021, the drilling rig will be towed to the location of the next well to be drilled which is the Thylacine North-1 well, 66 km south of Port Campbell at the following coordinates:

Northing (m)	Easting (m)	Latitude (S)	Longitude (E)
5,658,410	661,880	39° 12' 30.63"	142° 52' 29.67"

A total of four new Thylacine production wells will be drilled sequentially, taking approximately 70-90 days each. Drilling is expected to be completed by December 2022.

### Anchor pre-lays

In preparation for the drilling rig move to the location above, anchors and buoys will be pre-laid around mid-October 2021 (subject to weather) at the following coordinates:

Line	Northing (m)	Easting (m)	Latitude (S)	Longitude (E)
1	5,657,761	661,952	39°12'51.62"	142°52'33.23"
2	5,657,847	661,494	39°12'49.14"	142°52'14.07"
3	5,658,357	661,199	39°12'32.80"	142°52'01.33"
4	5,658,766	661,341	39°12'19.44"	142°52'06.90"
5	5,658,974	661,799	39°12'12.39"	142°52'25.81"
6	5,659,426	662,364	39°11'57.36"	142°52'48.96"
7	5,658,311	662,994	39°12'33.08"	142°53'16.18"
8	5,658,014	662,385	39°12'43.12"	142°52'51.06"

### Safety exclusion zone

Vessels in the area are required to observe the 500 m radius Petroleum Safety Zone (PSZ) around the drilling rig and after drilling is completed where well heads will remain in place. During drilling, a further 2 km radius cautionary zone will be in place for avoidance of the rig's mooring chains and anchors. A Notice to Mariners will be issued by the Australia Hydrographic Office.

### Drill rig and support vessel details

Marine users can communicate with the drilling rig and support vessels at any time via channel 16 or the contact details below:

#### Diamond Ocean Onyx Drilling Rig

**Call sign:** V7EB9

**Contact number:** +65 6480 3960 / +61 8 6263 0410

#### Support Vessels

- **Siem Topaz**
  - **Call sign:** LAYN7
  - **Contact number:** +61 (0) 429 115 283
- **Siem Sapphire**
  - **Call sign:** LDTO3
  - **Contact number:** +61 (0) 436 098 017
- **Siem Aquamarine**
  - **Call sign:** LARB3
  - **Contact number:** +61 (0) 417 283 434

### Further information

See the Beach website for further wells locations and detailed information sheets or click [here](#).

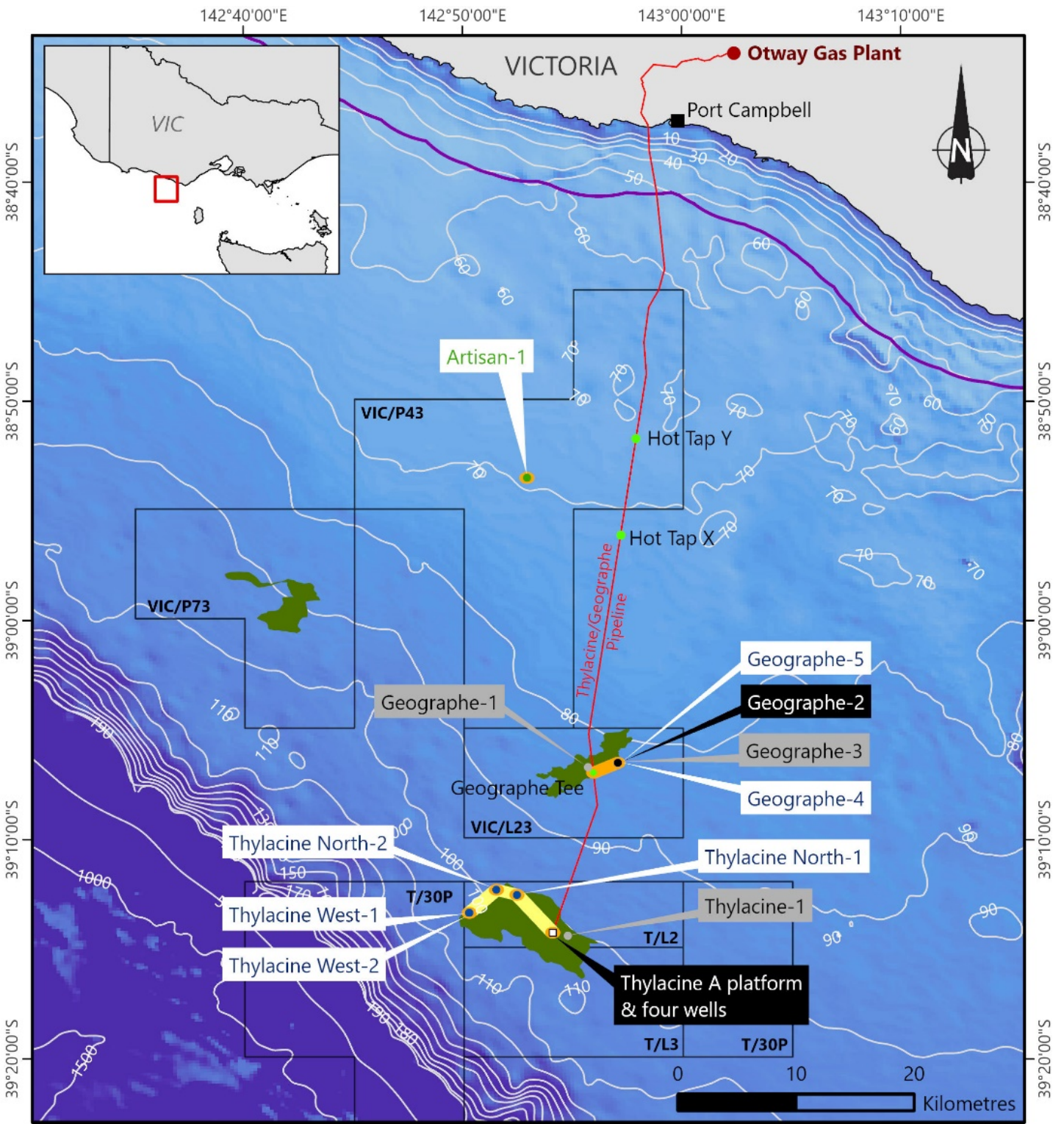
### We welcome your questions and feedback

P: 1800 797 011

E: [community@beachenergy.com.au](mailto:community@beachenergy.com.au)

[beachenergy.com.au](http://beachenergy.com.au)

# Otway Offshore Project - Location map



GDA2020

- Existing production wells
- Suspended wells
- New production wells
- Future production well
- Hot tap tees
- Thylacine platform
- Existing gas pipeline
- Beach permits
- Coastal waters (3nm limit)
- Gas fields
- Existing PSZ (6.50 Km<sup>2</sup>)
- Planned PSZ (5.65 Km<sup>2</sup>)

17/09/2021

The locations on this map are accurate at the time of publication and are subject to change

OT21-0003G-R3