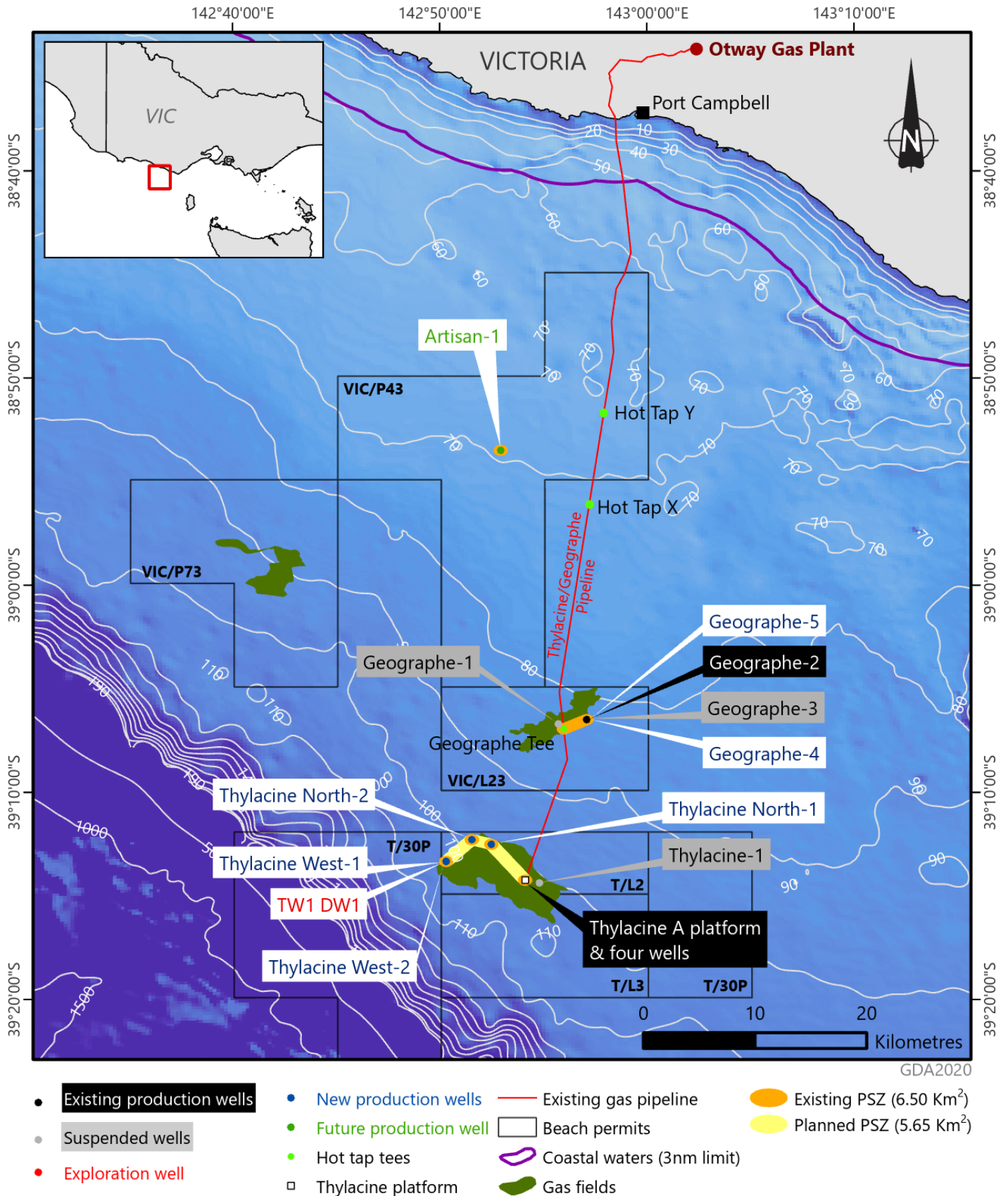


Otway Offshore Project

Drilling Locations and Timings



Disclaimer: This map shows proposed locations which may be subject to change. Refer to table over page for coordinates.

Drilling Locations and Timings

Beach Energy is continuing development of the Otway basin offshore natural gas reserves to ensure ongoing production at the Otway Gas Plant (near Port Campbell), which supplies natural gas to the Australian east coast gas market. Several wells will be drilled in Commonwealth waters, ranging from 32 to 80 km from Port Campbell.

Timing

Drilling commenced on 23 February 2021 and is expected to be completed by end of December 2022, followed by activities through to mid-2023 to tie-in the new wells to the existing pipeline and platform. Indicative drilling durations are shown in sequence from first to last in the table below. The timings and sequences may change and will be communicated to relevant stakeholders in advance.

Environment and Safety

All activities will be carried out in accordance with applicable safety and environment legislation. For information on the activities, environment protections, safety management, the regulatory framework and Environment Plans, see the detailed information sheet at beachenergy.com.au/vic-otway-basin.

Exclusion zones

Vessels in the area are required to observe the 500 m radius Petroleum Safety Zone (PSZ) around the drilling rig at each location, plus the 2 km radius cautionary zone for the avoidance of the rig's mooring chains and anchors. Locations of mooring chains and anchors will be made available at commencement of drilling each well. PSZs for the well heads installed on the ocean floor will remain in place after drilling. New PSZs will be created for seabed infrastructure required to connect the well heads to the existing Thylacine pipeline and offshore platform. Existing and proposed PSZs are shown on the map overleaf.

Well Name	Lat	Long	Expected duration
Artisan-1	38°53.491' S	142°52.948' E	Done
Geographe-5	39°6.480' S	142°52.495' E	90 to 120 days
Geographe-4	39°6.494' S	142°50.318' E	
Thylacine North-1	39°12.510' S	142°57.067' E	70 to 90 days
Thylacine West-2	39° 13.332' S	142°57.084' E	70 to 90 days
Thylacine West-1	39°13.338' S	142°50.318' E	70 to 90 days
TW1 DW1*			18 to 25 days
Thylacine North-2	39° 12.284 ' S	142° 51.557' E	70 to 90 days

*TW1 DW1 will be drilled as a side-track from Thylacine West-1.

All coordinates are provided as WGS 84 datum.

Coordinates and timings are correct at the time of publication as at 21 June 2021, and are subject to change.

Contact us

1800 797 011

community@beachenergy.com.au

beachenergy.com.au

