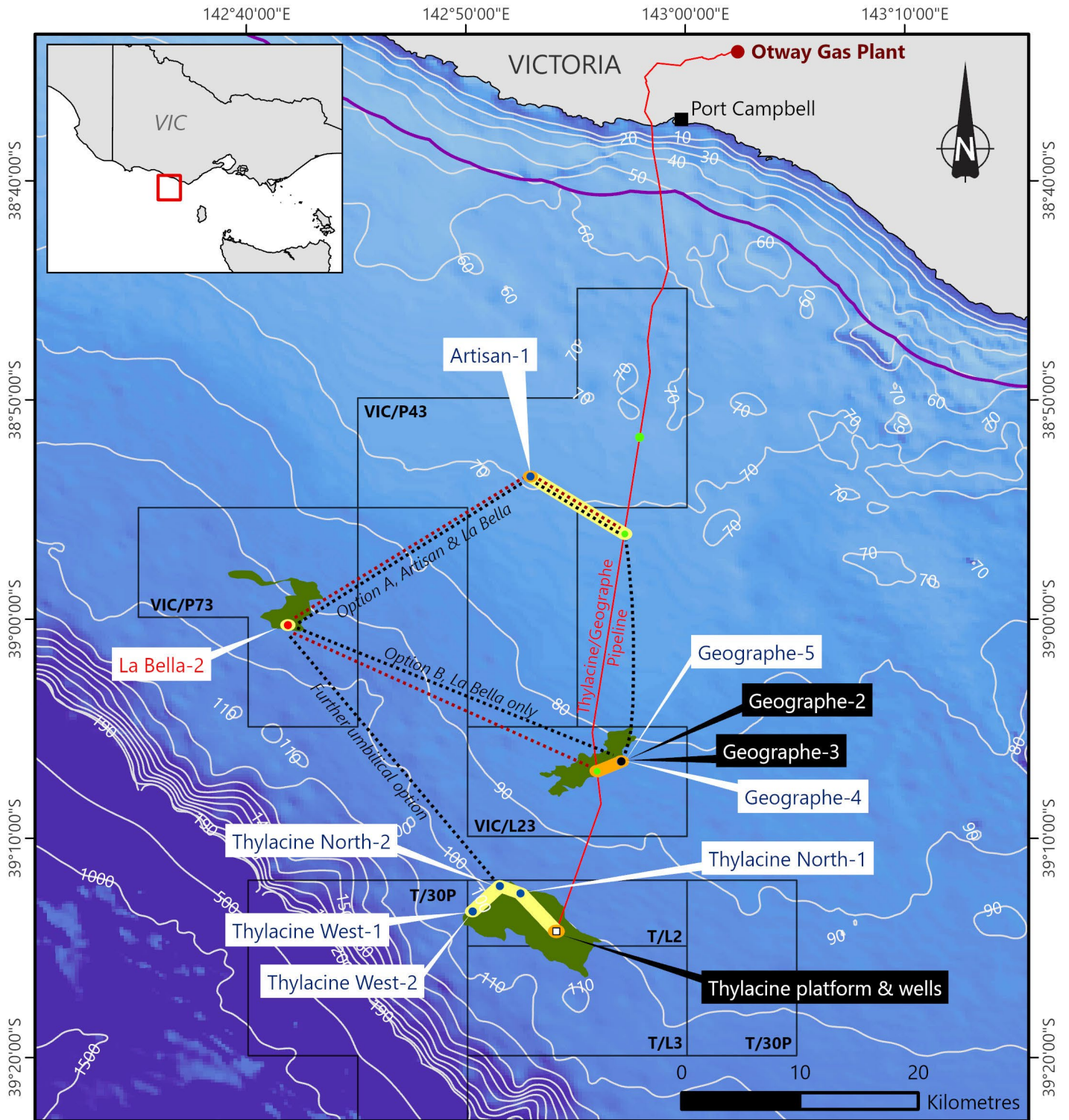


Otway Offshore Project

Drilling Locations and Timings



GDA2020

- Existing wells
- Planned wells
- Proposed well
- Hot tap tee
- Thylacine platform
- Beach permits
- Existing gas pipeline
- ⋯ Proposed umbilicals
- ⋯ Proposed flow lines
- Planned PSZ
- Existing PSZ
- Gas fields
- Coastal waters (3nm limit)

Disclaimer: This map shows proposed locations which may be subject to change. Refer to table over page for coordinates.

Drilling Coordinates and Timings

Beach Energy is continuing development of the Otway basin offshore natural gas reserves to ensure ongoing production at the Otway Gas Plant (near Port Campbell), which supplies natural gas to Victorian households and businesses.

Several wells will be drilled in Commonwealth waters, ranging from 32 to 80 km from Port Campbell, over approximately 18 to 24 months. Drilling commenced on 23 February 2021 and is expected to be completed by end of December 2022. The Geographe wells are in close proximity and will be drilled sequentially, followed by completion activities. The Thylacine wells will be drilled and completed sequentially. The planned sequences and durations of activities is shown in the table below. Any changes will be communicated in advance.

All activities will be carried out in accordance with applicable safety and environment legislation. The Environment Plan for Artisan exploration drilling can be viewed at: info.nopsema.gov.au/activities/11/show_public and the Environment Plan for the Geographe and Thylacine wells can be viewed at: info.nopsema.gov.au/activities/390/show_public

Exclusion zones


Vessels in the area are required to observe the 500 m radius Petroleum Safety Zone (PSZ) around the drilling rig at each location, plus the 2 km radius cautionary zone for the avoidance of the rig's mooring chains and anchors. Locations of mooring chains and anchors will be made available at commencement of drilling each well. PSZs for the well heads installed on the ocean floor will remain in place after drilling. New PSZs will be created for seabed infrastructure required to connect the well heads to the existing Thylacine pipeline and offshore platform. Existing and proposed PSZs are show on the map overleaf.

Well Name	Lat	Long	Expected duration
Artisan-1	38°53.491' S	142°52.948' E	35 to 55 days
Geographe-5	39°6.480' S	142°57.084' E	90 to 120 days
Geographe-4	39°6.494' S	142°57.067' E	
Thylacine North-1	39°12.510' S	142°52.495' E	70 to 90 days
Thylacine West-1	39°13.338' S	142°50.318' E	70 to 90 days
Thylacine West-2	39° 13.332' S	142° 50.310 ' E	70 to 90 days
Thylacine North-2	39° 12.284 ' S	142° 51.557' E	70 to 90 days

All coordinates are provided as WGS 84 datum.

Coordinates and timings are correct at the time of publication as at 12 March 2021.

Contact us

 1800 797 011

 community@beachenergy.com.au

beachenergy.com.au

