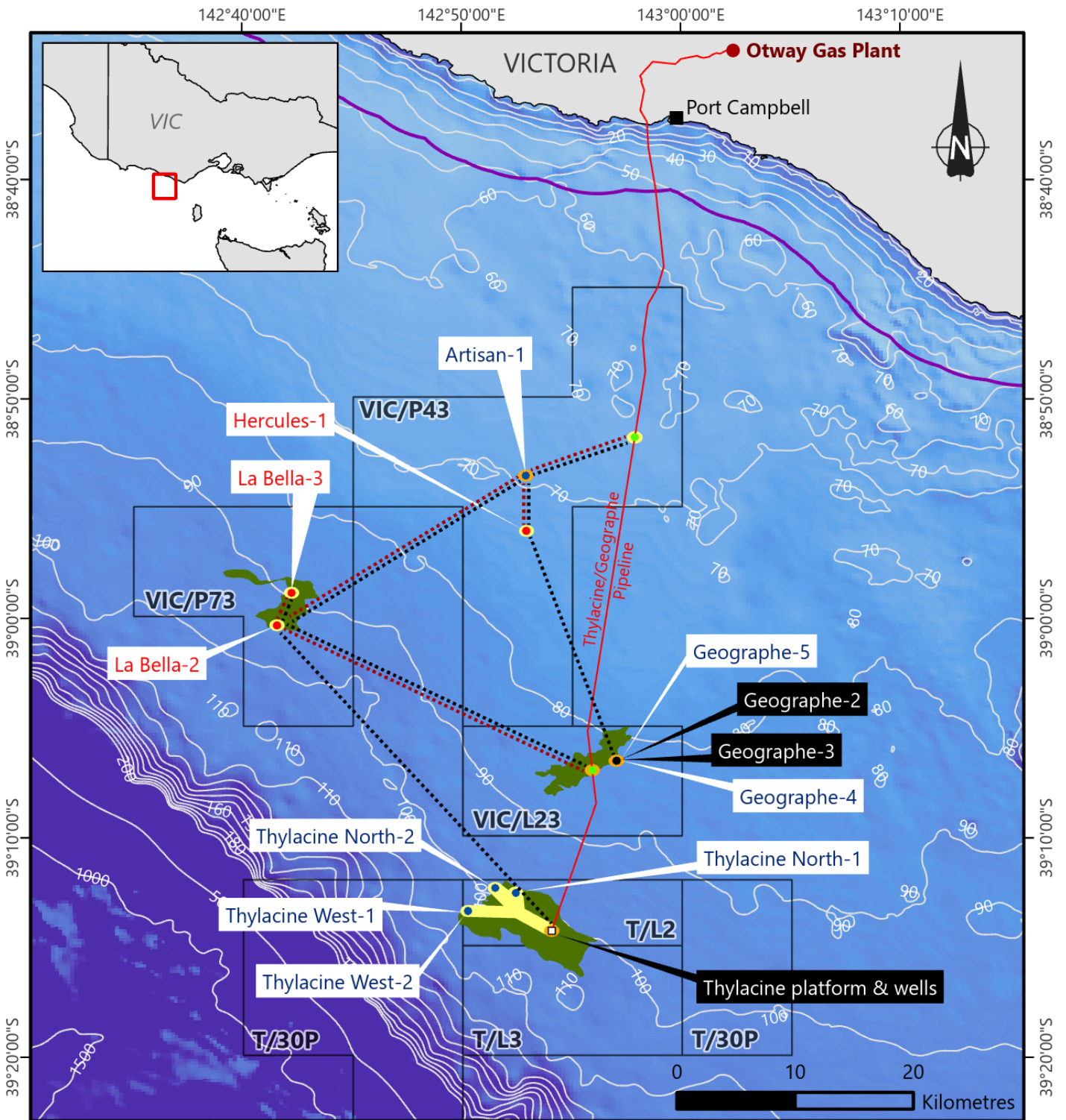


# Otway Offshore Project

## Drilling Locations and Timings



Geocentric Datum of Australia 1994

- Existing wells
- Planned wells
- Proposed wells
- Hot tap tee
- Thylacine platform
- Beach permits
- Existing gas pipeline
- ⋯ Proposed umbilicals
- ⋯ Proposed flow lines
- Planned PSZ
- Existing PSZ
- Gas fields
- Coastal waters (3nm limit)

Disclaimer: This map shows proposed locations which may be subject to change. Refer to table over page for coordinates.

## Drilling Coordinates and Timings

Beach Energy is continuing development of the Otway basin offshore natural gas reserves to ensure ongoing production at the Otway Gas Plant (near Port Campbell), which supplies natural gas to Victorian households and businesses.

Several wells will be drilled in Commonwealth waters, ranging from 32 to 80 km from Port Campbell, over approximately 18 to 24 months. Drilling will commence at a date to be determined which will be after 1 October 2020 and will be completed before 30 December 2023. After the start of drilling has been confirmed, stakeholders will be advised with a minimum of 4 week's notice before the drilling campaign commences. The planned sequences and durations of activities is as per the table below. Any changes will be communicated in advance.

All activities will be carried out in accordance with applicable safety and environment legislation. The Environment Plan for Artisan Exploration Drilling is available at: [info.nopsema.gov.au/activities/11/show\\_public](http://info.nopsema.gov.au/activities/11/show_public)

### Exclusion zones

Vessels in the area are required to observe the 500 m radius safety exclusion zone around the drilling rig, plus the 2 km radius cautionary zone for the avoidance of the rig's mooring chains and anchors. Exact locations of mooring chains and anchors will be made available at commencement of drilling each well.

Well Name	Lat	Long	Expected duration
Artisan-1	38°53.491' S	142°52.948' E	35 to 55 days
Thylacine North-1	39°12.510' S	142°52.495' E	70 to 90 days
Thylacine West-1	39°13.338' S	142°50.318' E	70 to 90 days
Geographe-4	39°6.494' S	142°57.067' E	70 to 90 days
Geographe-5	39°6.480' S	142°57.084' E	70 to 90 days
T/30P	TBC	TBC	TBC
Thylacine West-2	39° 13.332' S	142° 50.310 ' E	70 to 90 days
Thylacine North-2	39° 12.284 ' S	142° 51.557' E	70 to 90 days
Hercules-1	TBC	TBC	TBC
La Bella-2	TBC	TBC	TBC
La Bella-3	TBC	TBC	TBC

*All coordinates are provided as WGS 84 datum.*

*Coordinates and timings are correct at the time of publication as at 9 July 2020.*

## Contact us

 1800 797 011

 [community@beachenergy.com.au](mailto:community@beachenergy.com.au)

[beachenergy.com.au](http://beachenergy.com.au)

