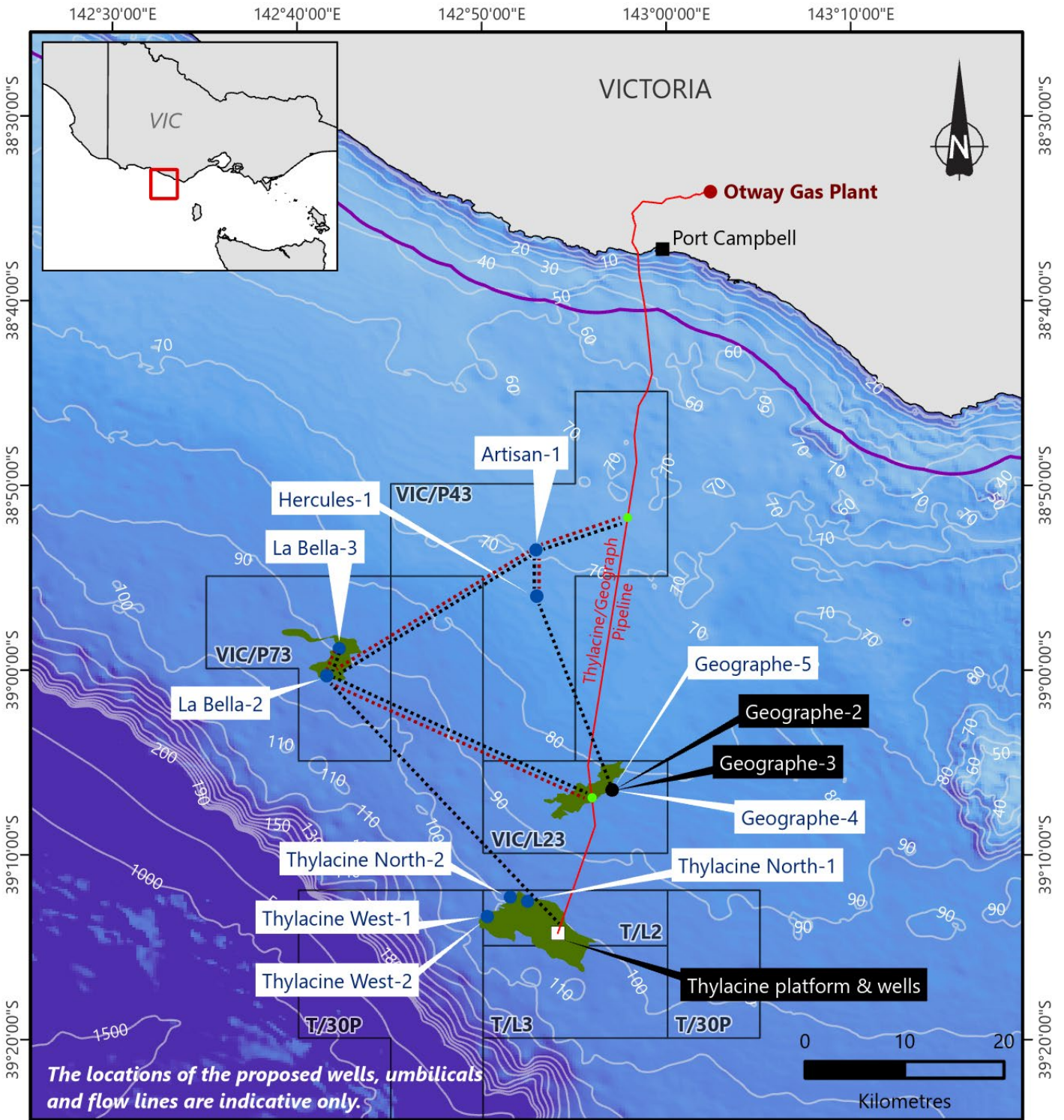


Otway Offshore Project

Drilling Locations



The locations of the proposed wells, umbilicals and flow lines are indicative only.

Legend

- Existing wells
- Proposed wells
- Hot tap tee
- Thylacine platform
- Beach permits
- Gas fields
- Existing gas pipeline
- ⋯ Proposed umbilicals
- ⋯ Proposed flow lines
- Coastal waters (3nm limit)

Geocentric Datum of Australia 1994

Disclaimer: This map shows proposed locations which may be subject to change. Refer to table over page for coordinates.

Drilling Coordinates and Timings

Beach Energy is continuing development of the Otway basin offshore natural gas reserves to ensure ongoing production at the Otway Gas Plant (near Port Campbell), which supplies natural gas to Victorian households and businesses.

Several wells are planned to be drilled in Commonwealth waters, ranging from 32 to 80 km from Port Campbell, over approximately 18 months. Drilling is expected to commence mid-April 2020 with the Artisan exploration well that will take approximately 35 to 55 days. Timings for drilling subsequent wells is to be confirmed. The current planned sequences of activities is as per the order listed below. Any changes will be communicated in advance.

All activities will be carried out in accordance with applicable safety and environment legislation. The Environment Plan for Artisan Exploration Drilling is available at: info.nopsema.gov.au/activities/11/show_public

Exclusion zones

Vessels in the area are required to observe the 500 m radius safety exclusion zone around the drilling rig, plus the 2 km radius cautionary zone for the avoidance of the rig's mooring chains and anchors. Exact locations of mooring chains and anchors will be made available at commencement of drilling each well.

Well Name	Lat	Long	Expected duration
Artisan-1	38°53.491' S	142°52.948' E	35 to 55 days
Thylacine North-1	39°12.510' S	142°52.495' E	70 to 90 days
Thylacine West-1	39°13.338' S	142°50.318' E	70 to 90 days
Geographe-4	39°6.494' S	142°57.067' E	70 to 90 days
Geographe-5	39°6.480' S	142°57.084' E	70 to 90 days
T/30P	TBC	TBC	TBC
Thylacine West-2	39° 13.332' S	142° 50.310 ' E	70 to 90 days
Thylacine North-2	39° 12.284 ' S	142° 51.557' E	70 to 90 days
Hercules-1	TBC	TBC	TBC
La Bella-2	TBC	TBC	TBC
La Bella-3	TBC	TBC	TBC

All coordinates are provided as WGS 84 datum.

Coordinates and timings are correct at the time of publication as at March 2020.

Contact us

1800 797 011

community@beachenergy.com.au

beachenergy.com.au

