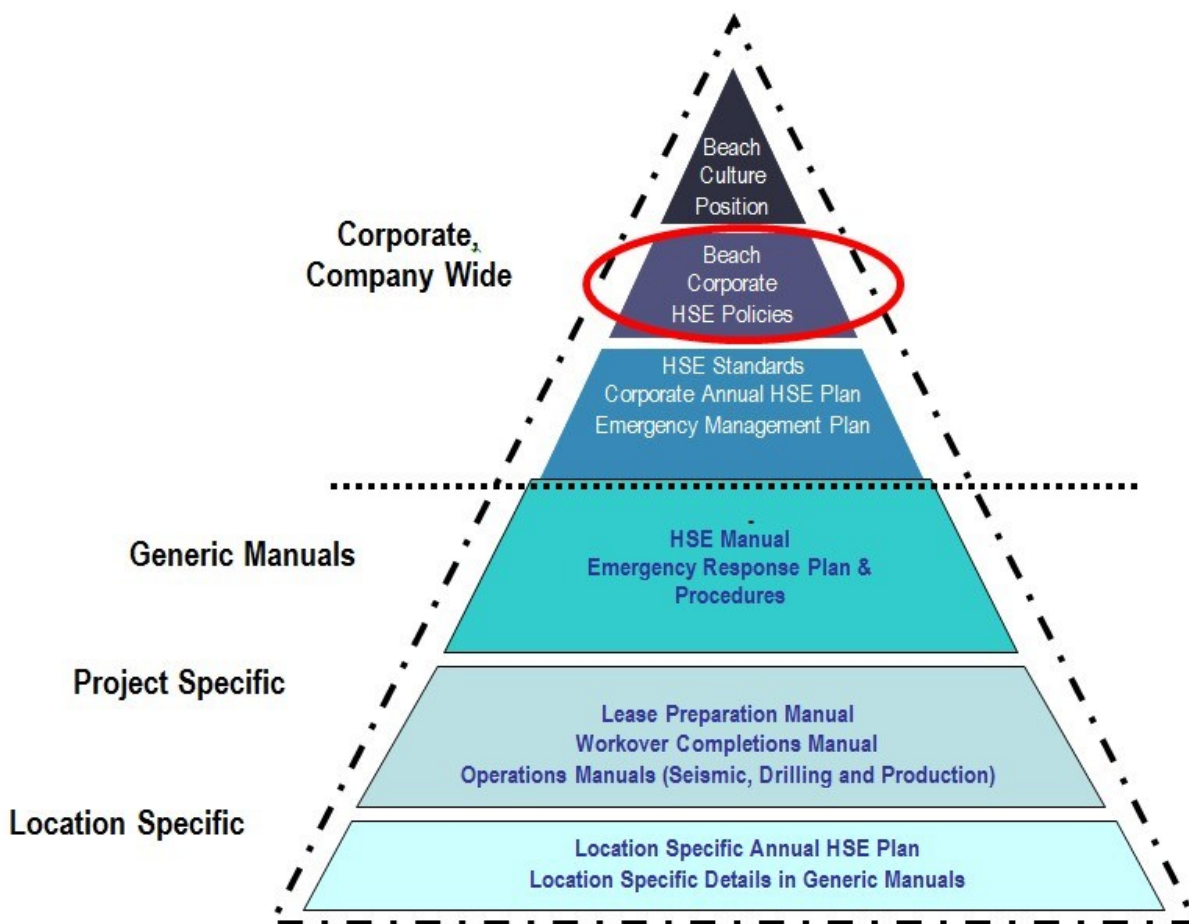


Introduction

This document contains the Beach Energy Ltd (Beach) Health, Safety and Environment (HSE) policy statements that form the second tier of the Beach HSE Management System structures (illustrated in the diagram below).

The policy statements provide a statement of overall intent and commitment to HSE.

The Beach Board approves policy statements on recommendation of the Chief Executive Officer, who is responsible for ensuring implementation of the policy and related documents and ensuring that reviews of the policy and related documents are conducted at appropriate intervals.



Health and Safety Policy

Beach is committed to the health and safety of all workers and the public through sound management practices in process and personal safety and visible safety leadership across all operations.

Beach's objectives are to ensure:

- A healthy and safe workplace for all workers at all sites;
- The protection of members of the public possibly affected by its operations; and
- Compliance with all applicable Government Acts, regulations and standards.
- Facilitate good business outcomes and growth through excellent Health and Safety performance.

These objectives will be achieved by:

- Providing adequate resources to ensure that the objectives of this policy can be met;
- Providing appropriate training and education in Health and Safety
- Maintaining and improving the HSE Management System including as appropriate developing relevant new HSE standards and procedures;
- Instigating a culture where all workers are aware of safety hazards in their work area and act accordingly;
- Implementing controls to manage Health and Safety risks and monitor the effectiveness of those controls;
- Embedding Health and Safety planning into project plans and decision-making processes;
- Developing health and safety targets in consultation with employees and contractors, to promote, measure, report and continually improve health and safety performance;
- Communicating, consulting and encouraging participation with employees and contractors, and relevant parties stakeholders;
- Requiring workers who are contractors to follow HSE standards and practices that are consistent with this policy;
- Requiring that incidents, hazards, near misses, concerns and complaints are reported adequately, investigated and steps taken to prevent recurrence;
- Following processes to ensure that Beach workers are medically fit and capable of fulfilling their responsibilities at all time; and
- Supporting the recovery and rehabilitation of Beach workers in the event of work related injury or illness.

Our Vision is:

“SAFETY TAKES PRECEDENCE IN EVERYTHING WE DO”

Similarly each worker has the responsibility to:

- Protect their own safety and that of their fellow workers;
- Proactively ensure that they are fully aware of the Health and Safety risks and controls associated with those risks as they pertain to any task they are required to carry out;
- Follow all reasonable HSE instructions as directed by supervisors;
- Comply with all Beach and regulatory health and safety requirements;
- Participate in the promotion and development of safe work practices and procedures at Beach and within non-operated joint ventures.

Application of this policy resides with all workers sharing responsibility for its implementation.

Operative from: 1 September 2017

Review by: 1 September 2019

Environmental Policy

Beach is committed to conducting operations in an environmentally responsible and sustainable manner.

To fulfil these objectives, to as far as is reasonably practicable, Beach will:

- Maintain and improve the HSE Management System including as appropriate developing applicable environmental standards and procedures;
- Establish environmental objectives and targets and implement programs to achieve them and report on their performance;
- Commit to and comply with relevant laws, regulations and environmental management plans for each activity as required by the appropriate regulating authority, and where adequate laws do not exist, adapting to and applying globally applicable corporate operating standards;
- Commit to identify, assess and control environmental impacts of our operations by achieving proactive management of activities;
- Avoid disturbance of known sites of archaeological, historical and natural significance and protect native flora and fauna in all areas of operation;
- Ensure that incidents, near misses, concerns and complaints are reported adequately, investigated and appropriate procedures implemented;
- Inform all employees and contractors of their environmental and cultural heritage responsibilities including consultation and distribution of appropriate environmental management guidelines, regulations and publications for all relevant activities; and
- Ensure Beach has the resources and the skills necessary to achieve its environmental commitments.
- Application of this policy resides with all employees and contractors sharing responsibility for its implementation.

Operative from: 1 September 2017

Review by: 1 September 2019